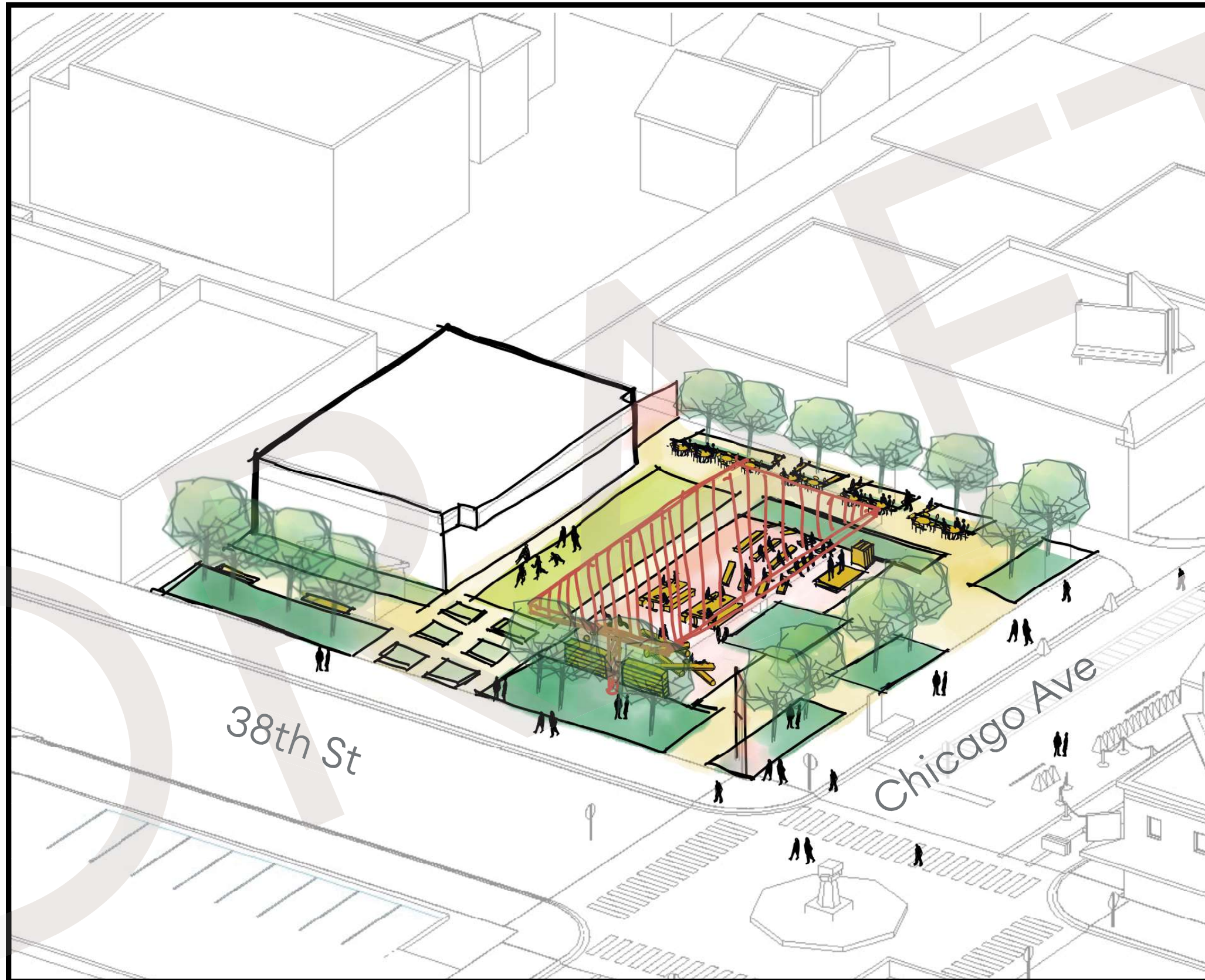


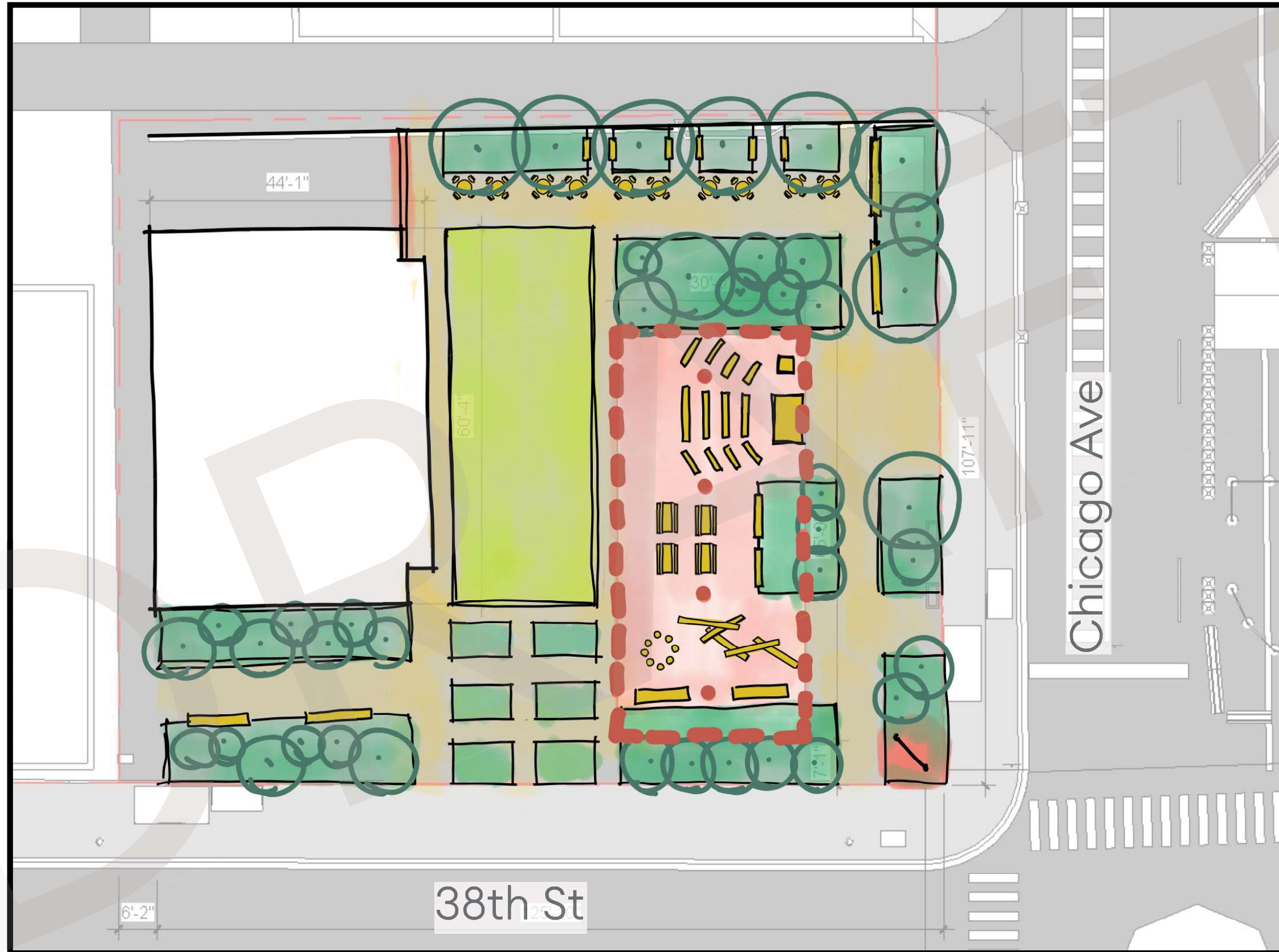
Idea A

Enhanced Existing Peoples' Way

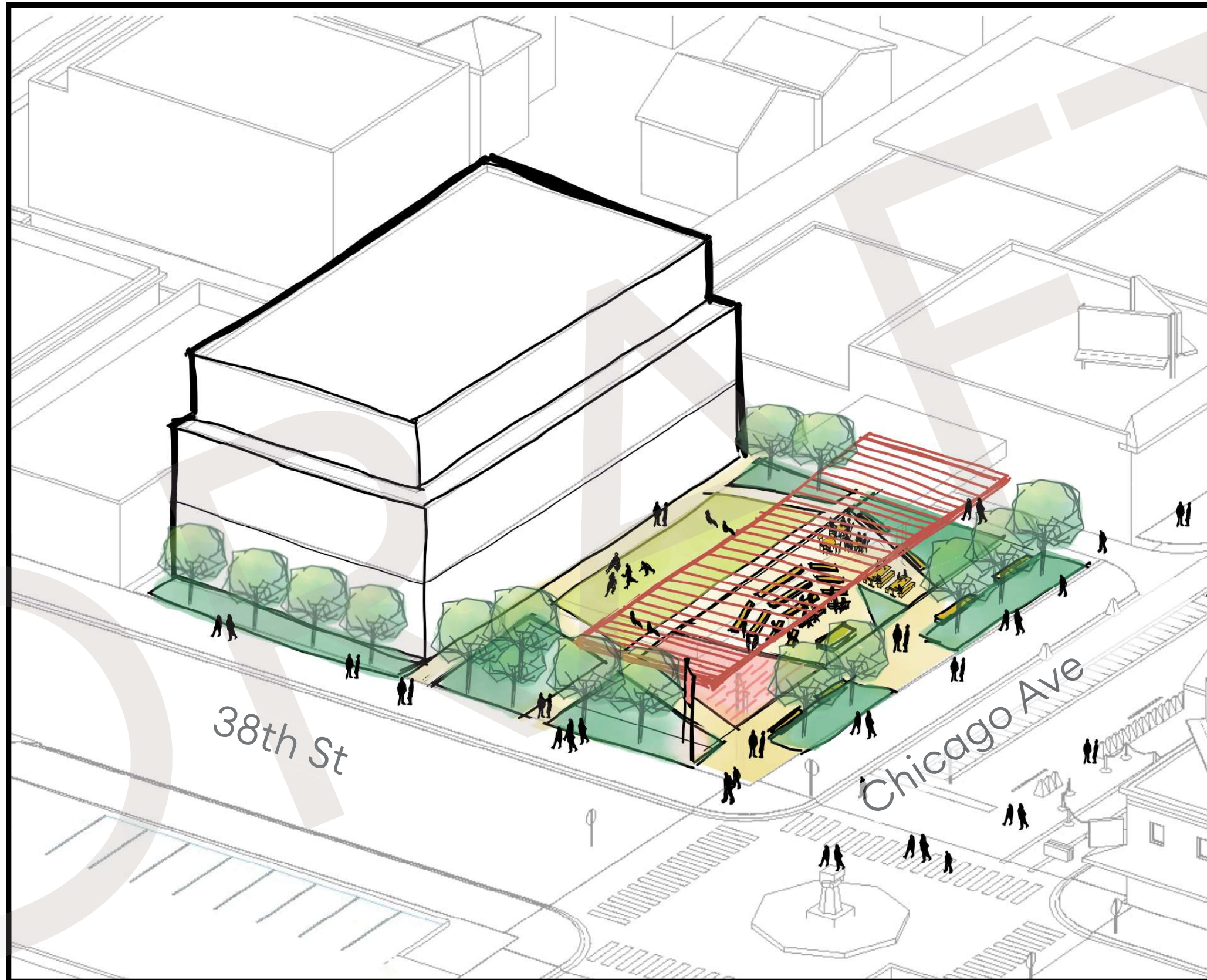


Idea A

Enhanced Existing Peoples' Way

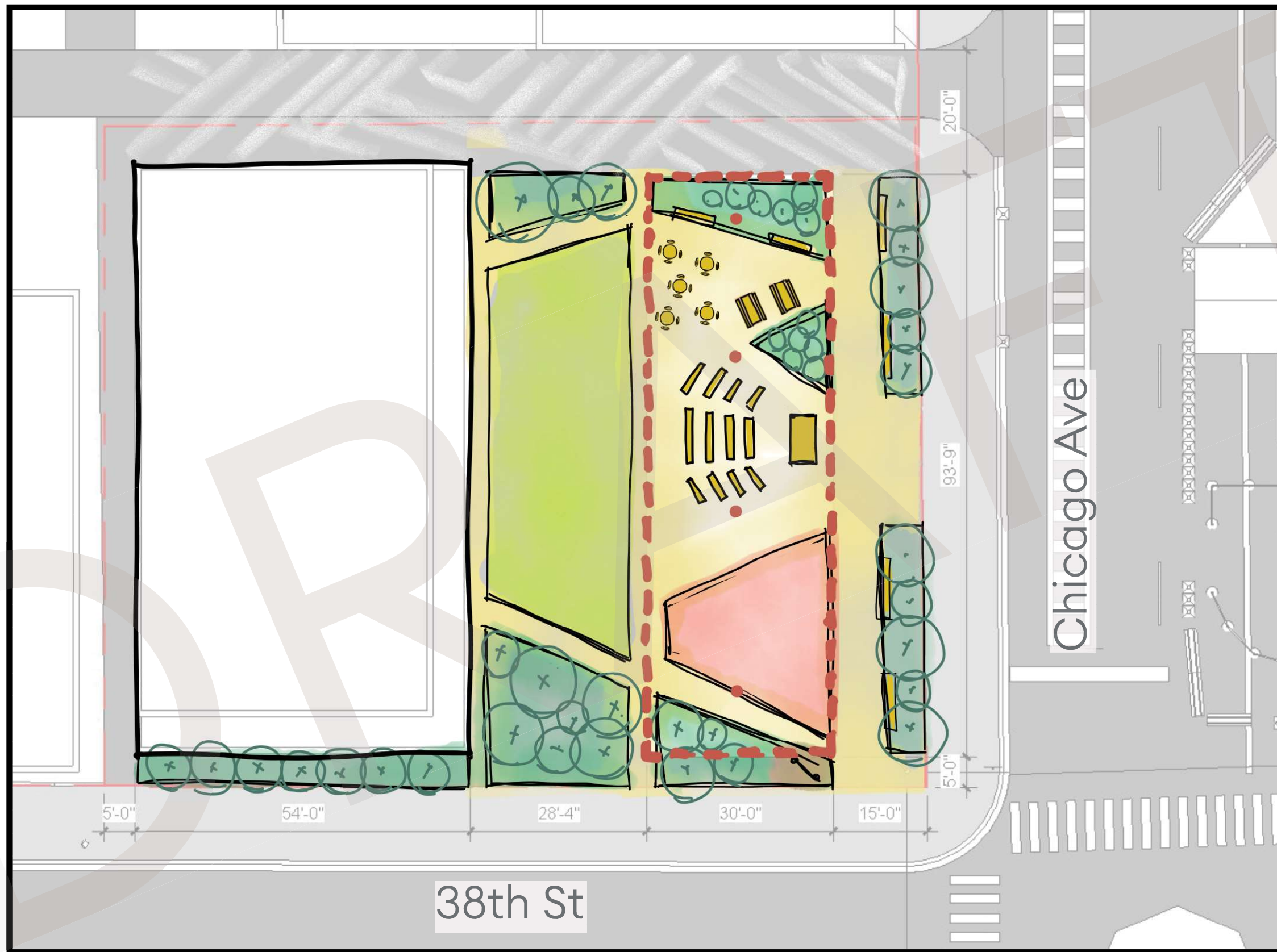


Idea B
Low/Medium Density

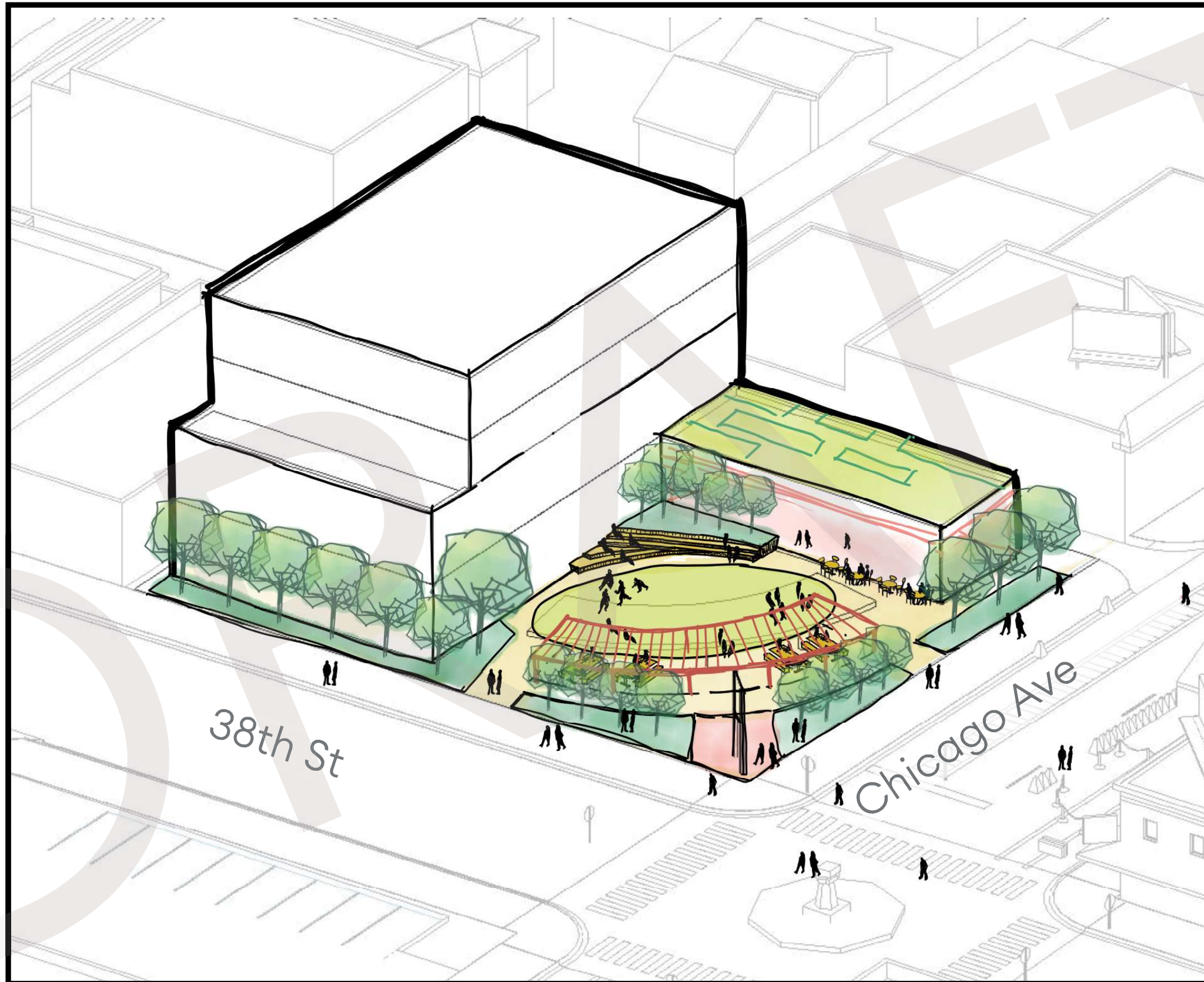


Idea B

Low/Medium Density

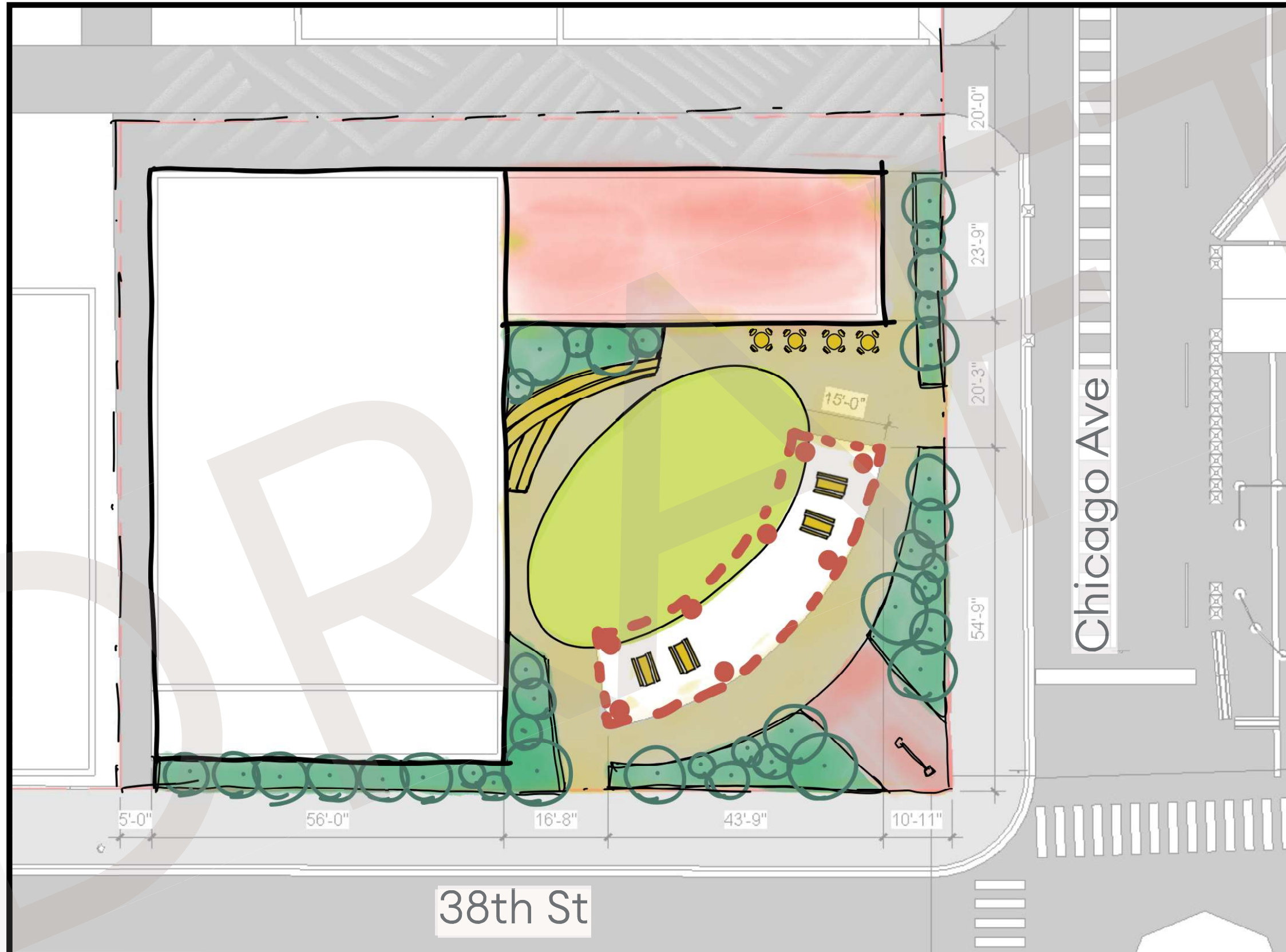


Idea C
Medium/High Density

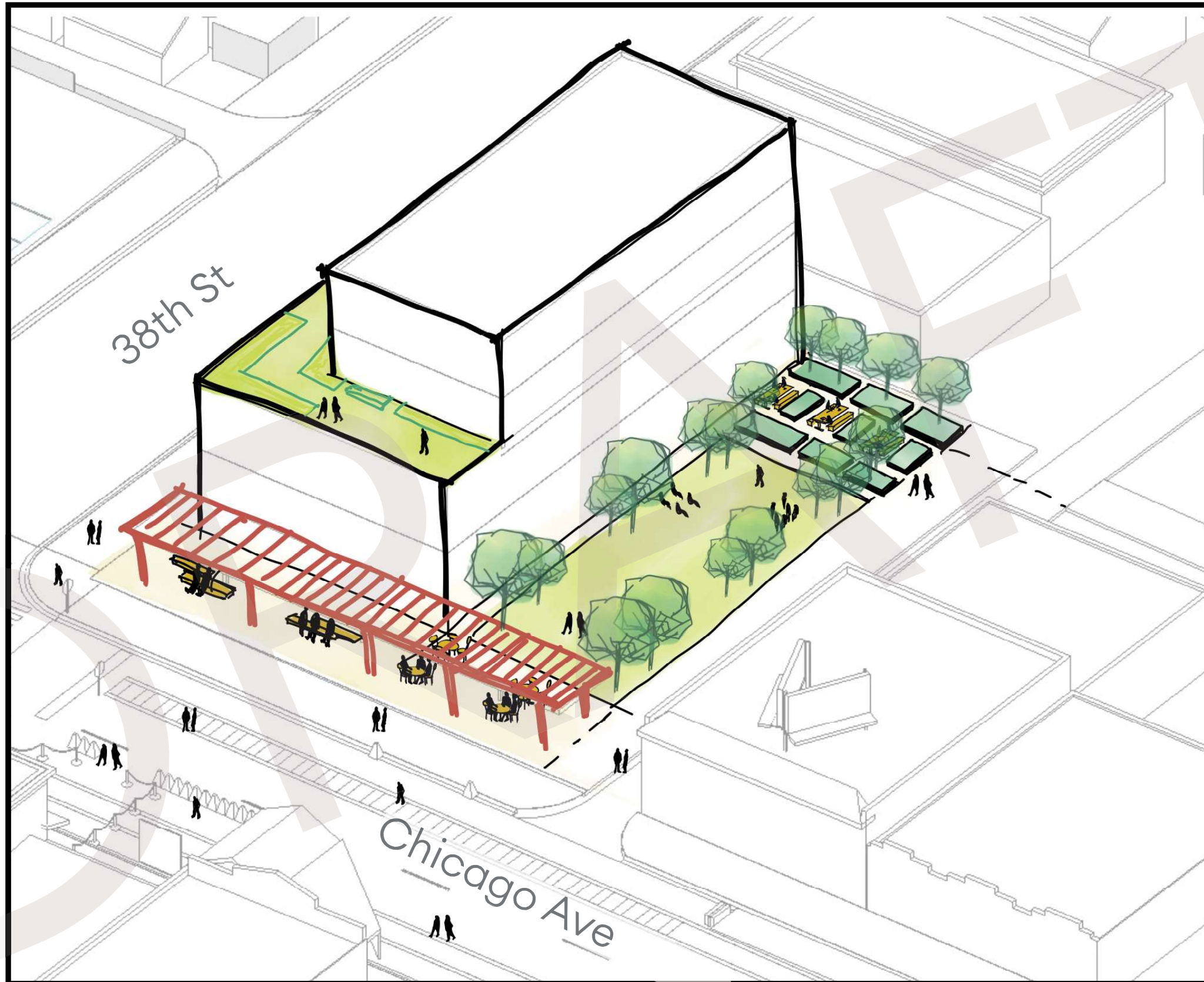


Idea C

Medium/High Density

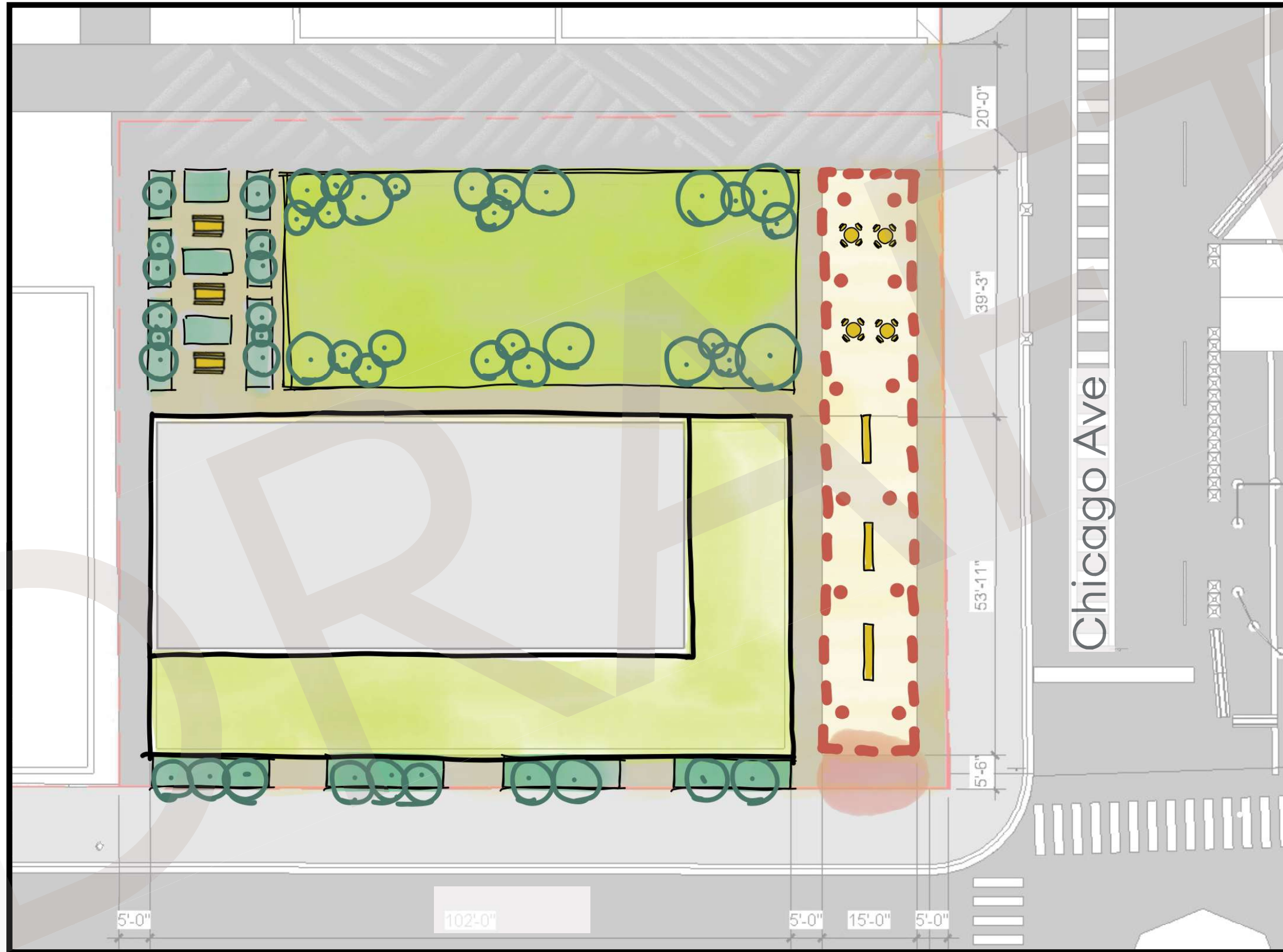


Idea D
Medium Density

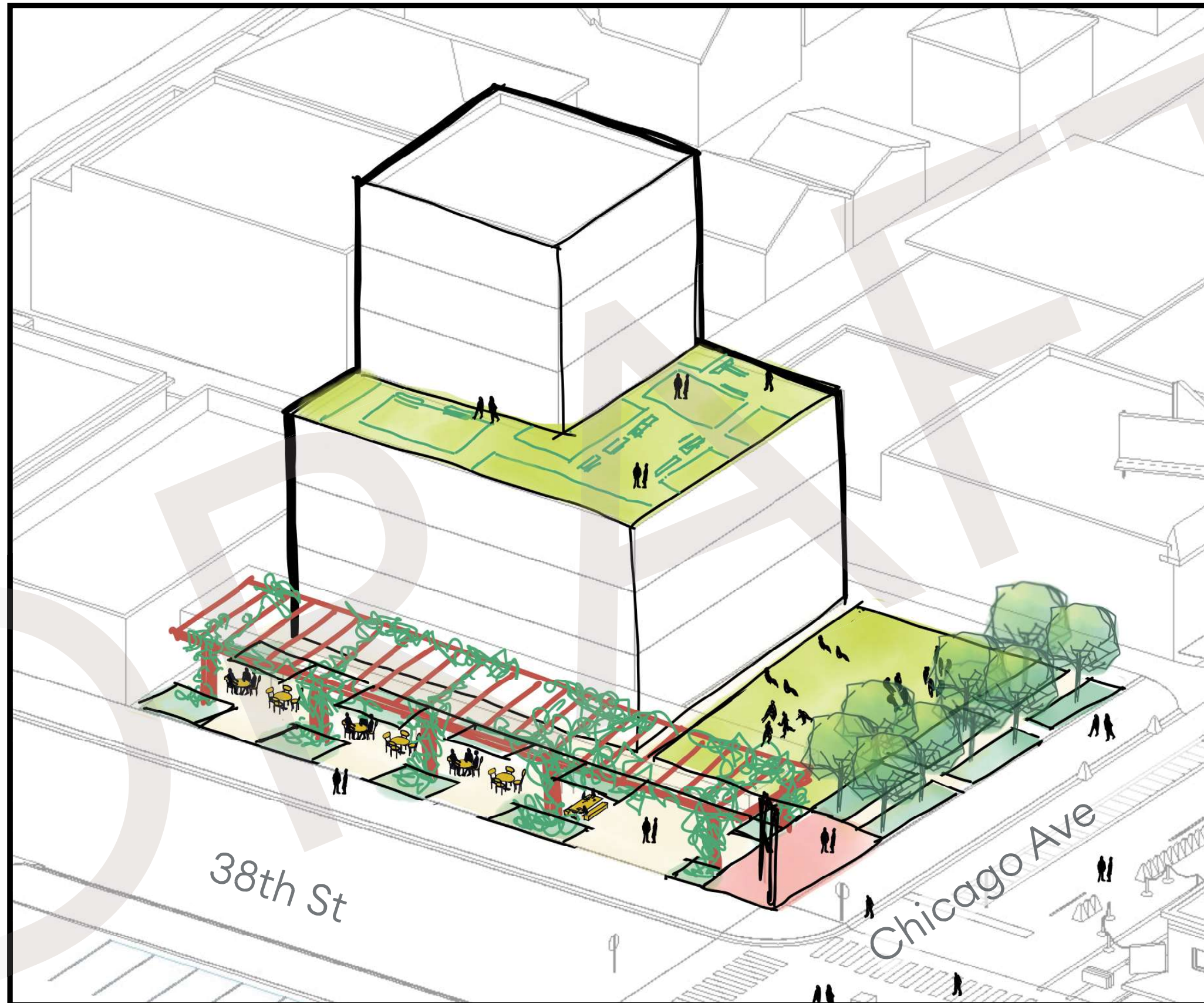


Idea D

Medium Density

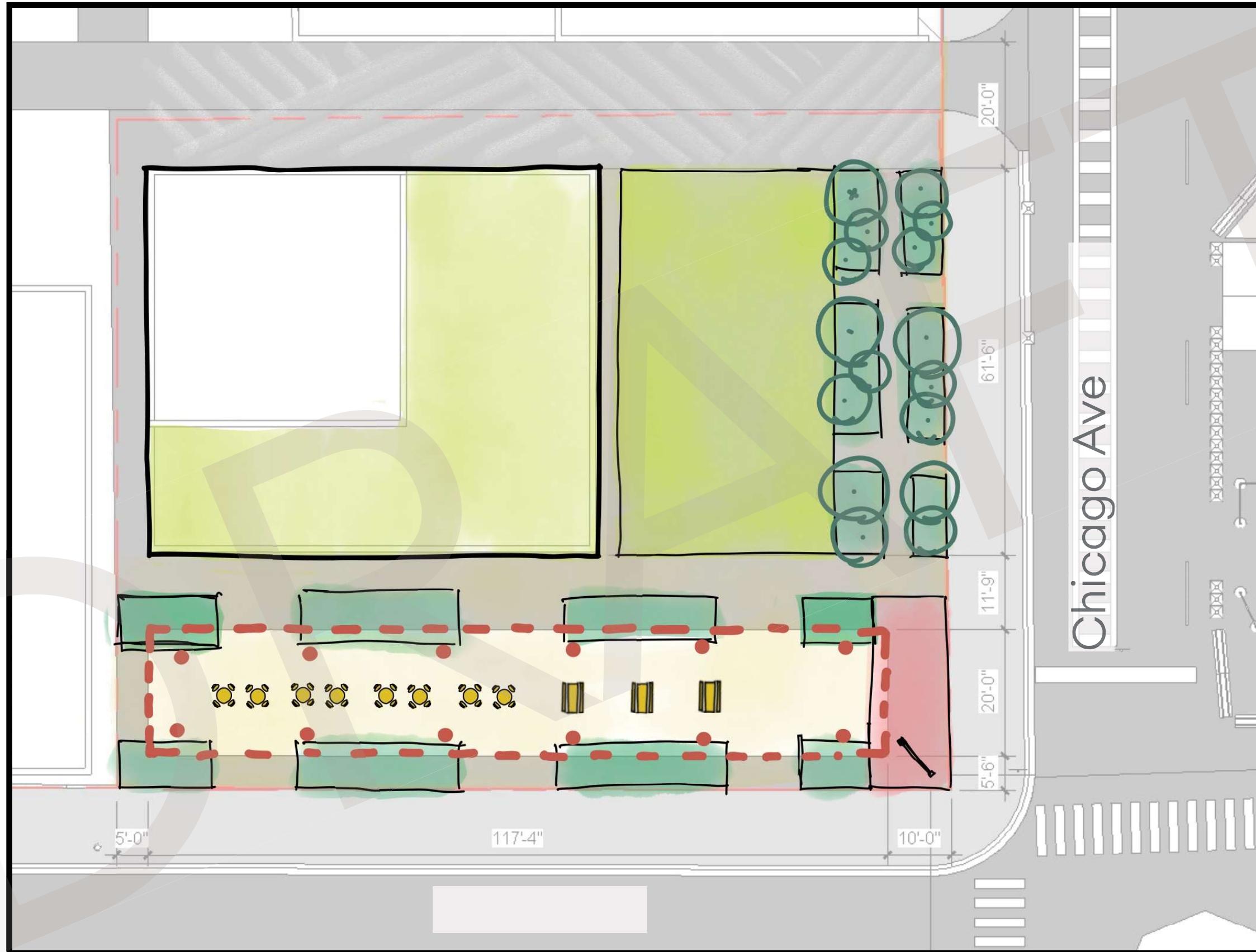


Idea E
Medium/High Density



Idea E

Medium/High Density



Right-of-Way Concept Development

Concept Development

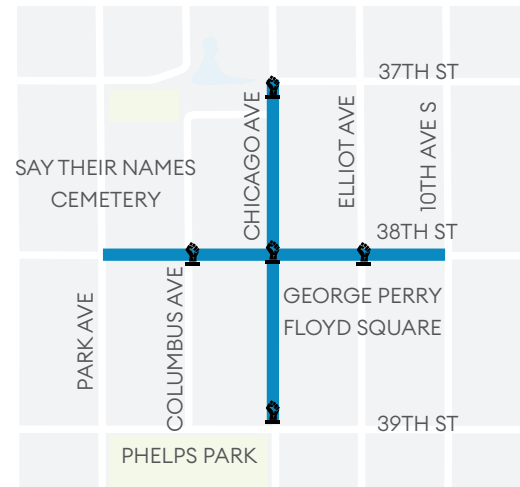
Public Works developed three concepts guided by the project's Design Goals, Engagement Themes, and Design Principles that were outlined in the Design Framework. Each of the concepts maintains the same design along 38th Street and Chicago Avenue south of 38th Street, with the three concepts representing different options for Chicago Avenue north of 38th Street.

This is the first draft, which will be guided by ongoing conversations with stakeholders and technical analysis. Many detailed design elements are still being analyzed and are not yet shown in the concept layout graphics. Public Works is seeking input from stakeholders on the three concepts to guide the technical analysis to inform the evaluation and recommendations.

Project Intent

- This project will seek to balance traditional asset management needs with the intersectionality of justice, healing, placemaking and culture.
- Public Works and community stakeholders will evaluate a range of options that represent transportation, utility, and community-centered public realm needs.
- The reconstruction project will involve the entire public right-of-way and will include new sidewalks, ADA pedestrian ramps, pavement, curb and gutter, lighting, and utility improvements.
- This work will also thoroughly consider and explore the integration of METRO D Line bus rapid transit and local bus service on Routes 5 and 23.

Project Area



Existing Photos

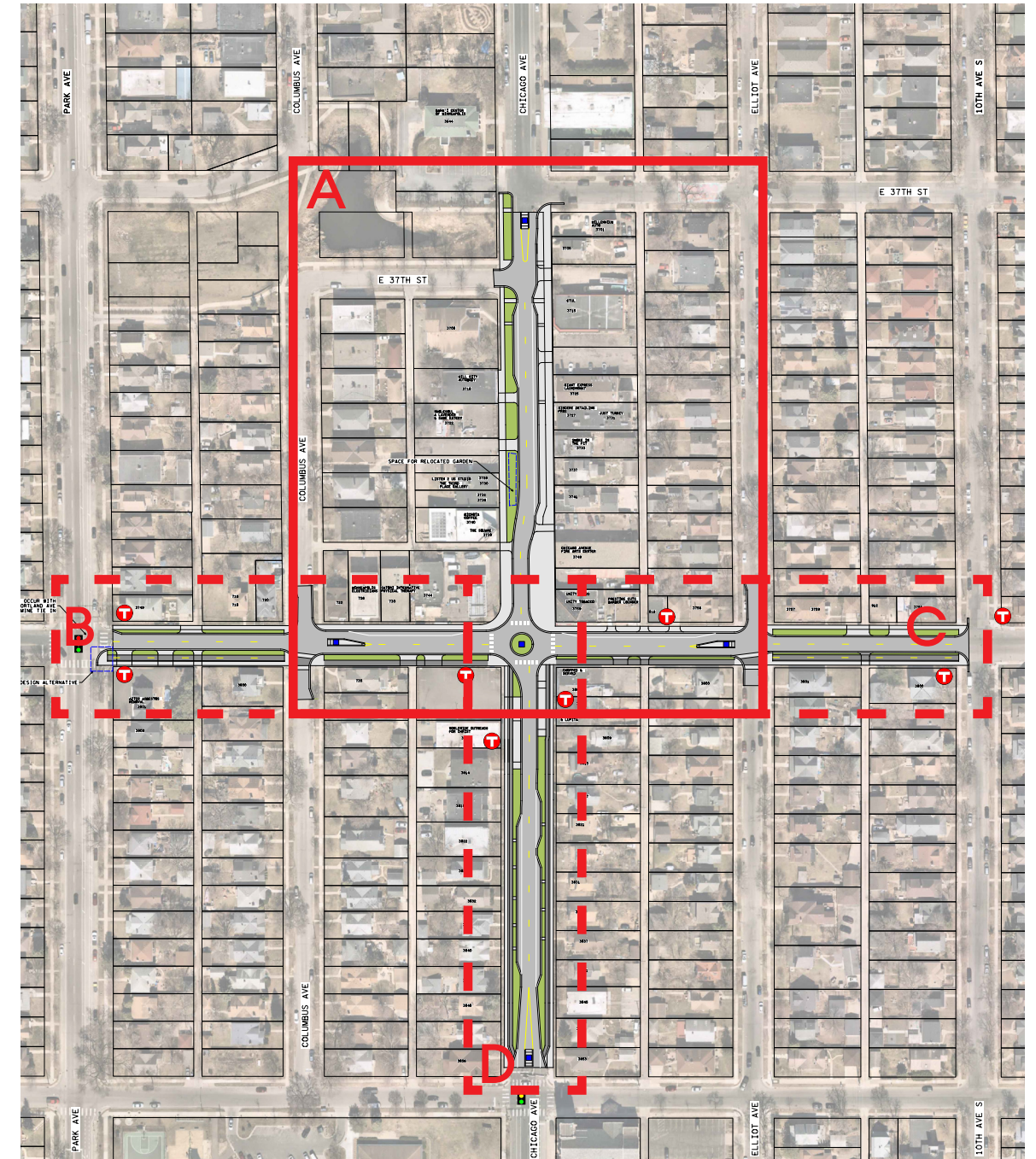


Design Priorities

- Art and Memorial Space
- Inclusive Community Gathering space
- Safe Spaces for All Transportation
- Maintaining Access for Emergency Vehicles, Businesses, and Residents

Design Features

- Widened sidewalks and new boulevards with new ADA ramps and space for pedestrian street lighting, trees, stormwater treatment, and plantings.
- New and upgraded low stress bikeways.
- Traffic calming and safety features, such as bumpouts, medians, chicanes, and narrower travel lanes for shorter street crossings
- The Open and Transit Mall Concepts return D Line and Route 5 transit service along Chicago Avenue. In the Pedestrian Plaza Concept, the D Line and Route 5 will not return to Chicago Avenue through the project area. All concepts keep Route 23 transit service on 38th Street.
- On street parking for residents, businesses, visitors, loading, and deliveries.



Segment A: Chicago Ave, 37th St to 38th St, Segment B: 38th E, Park Ave to Chicago Ave, Segment C: 38th E, Chicago Ave to 10th Ave, Segment D: Chicago Ave, 38th St to 39th St

Right-of-Way Concept Options - Segment A: Chicago Ave, 37th St to 38th St

Open

Maintains vehicular access, while also restoring access for Metro Transit's D Line and Route 5 service.

- Preserves and expands community uses for gathering, art, and memorials.
- Provides wider sidewalks, boulevards, and allows for some on-street parking.
- Stops for the D Line and Route 5 would be located south of 38th Street. Route 23 bus stops would be added on 38th Street near Chicago Avenue.

Transit Mall

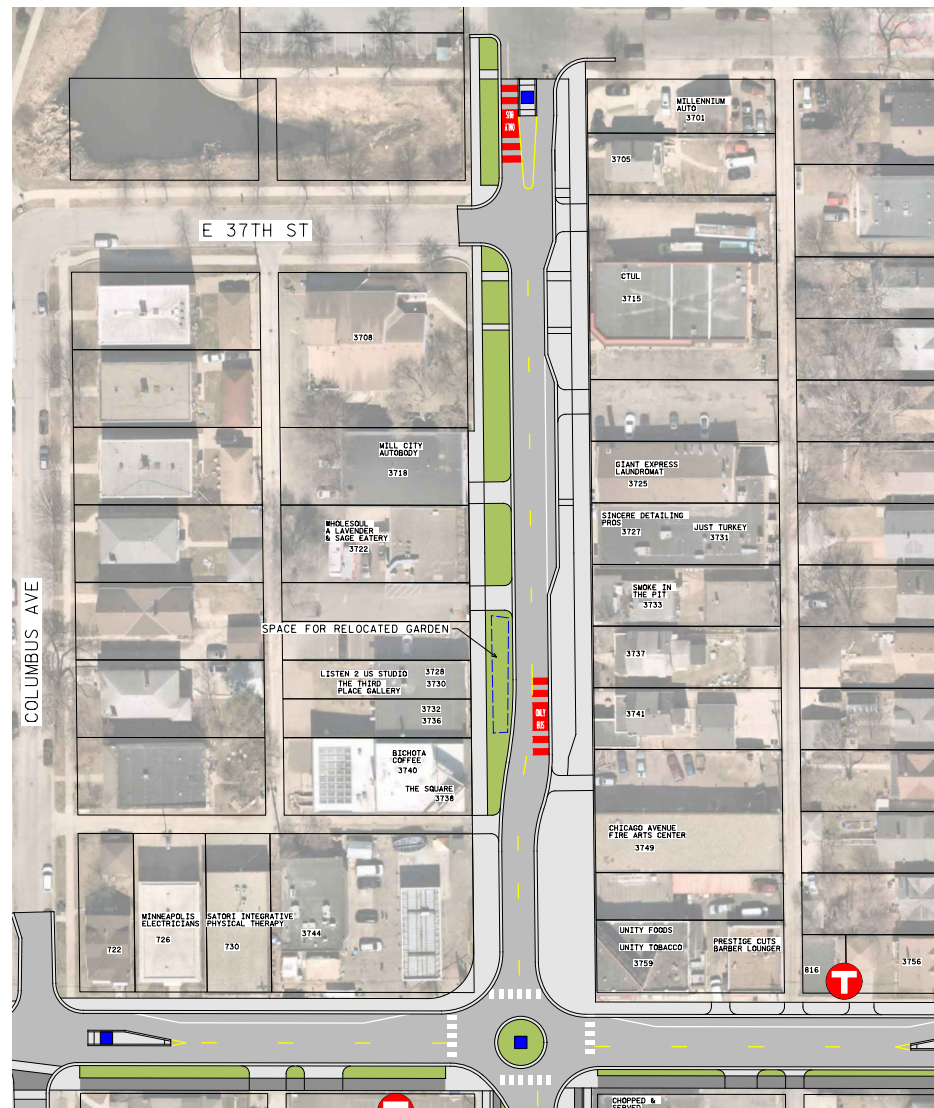
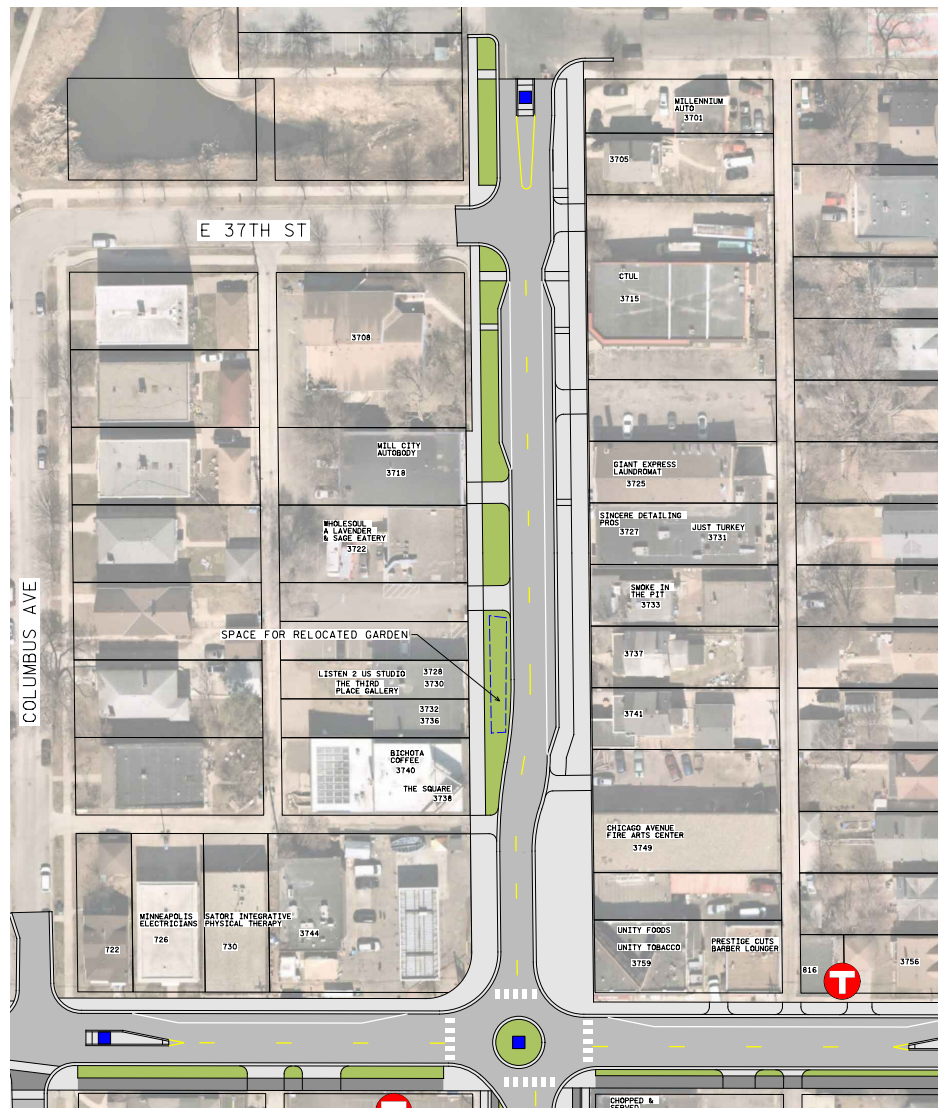
Limits vehicular access to local residents and businesses only, while maintaining access for emergency vehicles and restoring Metro Transit's D Line and Route 5 service.

- Preserves and expands community uses for gathering, art, and memorials.
- Provides wider sidewalks, boulevards, and allows for limited on-street parking to accommodate access, loading, and deliveries.
- Through access will be restricted and discouraged for non-local traffic.
- Stops for the D Line and Route 5 would be located south of 38th Street. Route 23 bus stops would be added on 38th Street near Chicago Avenue.

Pedestrian Plaza

Restricts vehicular access to local residents and businesses only, while maintaining access for emergency vehicles.

- Preserves and expands community uses for gathering, art, and memorials.
- Provides wider sidewalks, boulevards, and allows for limited on-street parking to accommodate access, loading, and deliveries.
- Through access will be restricted and discouraged for non-local traffic.
- D Line and Route 5 transit service will not return to Chicago Avenue through the project area. Route 23 will continue to serve 38th Street, with bus stops added near Chicago Avenue.



DRAFT

Right-of-Way Concept Options - Segments B, C, D

Schedule and Upcoming Engagement

March 2024 - November 2024

- Develop Priorities and Vision: Preferred concept layout recommendation to the City Council November 2024.
- Monthly Visioning Workshops - 4th Tuesday of the month 5:30-8:00 pm at the Square at Chicago Ave Shops, 3736 Chicago Ave
- Community Focus Groups - July through September with businesses, residents and other community groups.
- Dinner Dialog October 2024

Fall 2024 - Winter 2025

- Advance Final Design and Construction Plans

Beyond 2025

- Initiate construction for underground utilities and the street

Contacts

Nathan Koster, Public Works – Transportation Planning
nathan.koster@minneapolismn.gov | 612-673-3638

Beverly Warmka, Public Works – Engineering and Design
Beverly.Warmka@Minneapolismn.gov | 612-673-3762

Alexander Kado, Office of Public Service – George Floyd Square
Project Manager
38thandchicago@minneapolismn.gov | 612-673-3080

For reasonable accommodations or alternative formats please contact Public Works, Nathan Koster, nathan.koster@minneapolismn.gov, 612-673-3638. People who are deaf or hard of hearing can use a relay service to call 311 at 612-673-3000. TTY users call 612-263-6850.

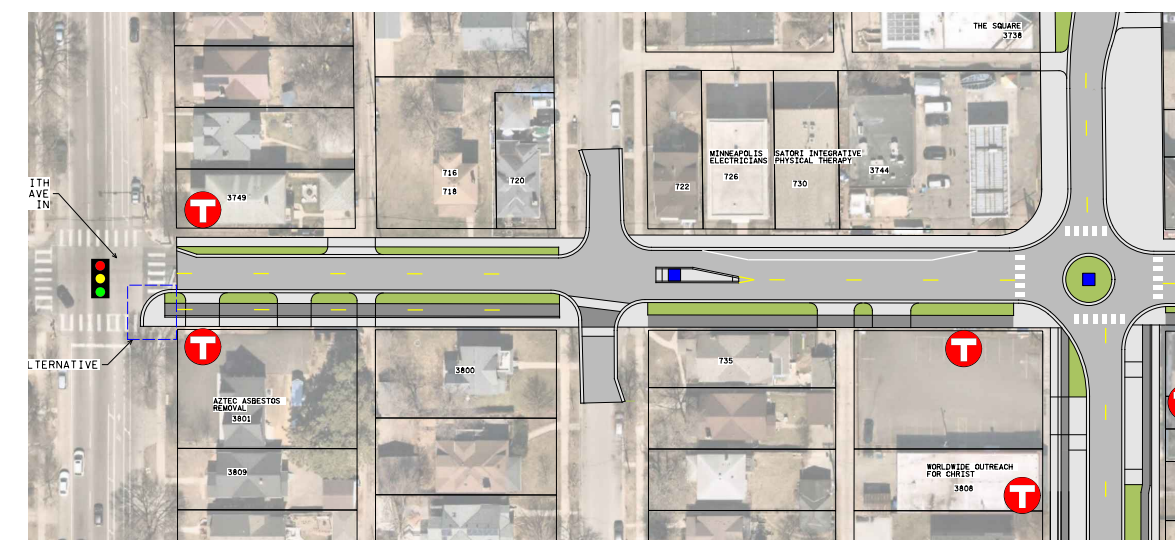
Sign up for project updates



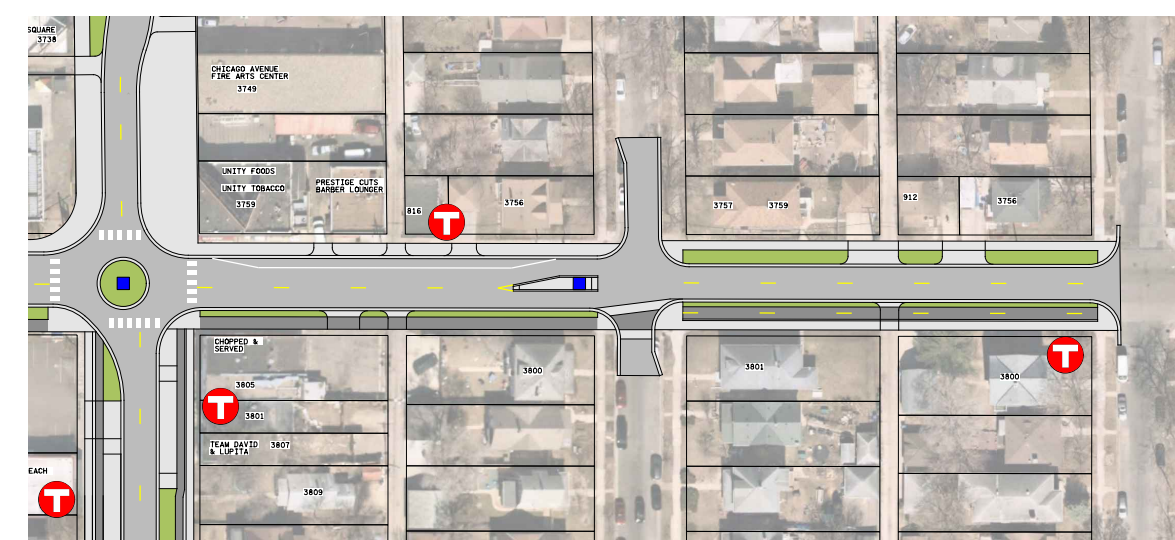
SCAN ME

Para ayuda, llame al 311. Rau kev pab hu 311. Hadii aad Caawimaad u baahantahay wac 311.

Segment B: 38th E, Park Ave to Chicago Ave



Segment C: 38th E, Chicago Ave to 10th Ave S



Segment D: Chicago Ave, 38th St to 39th St

